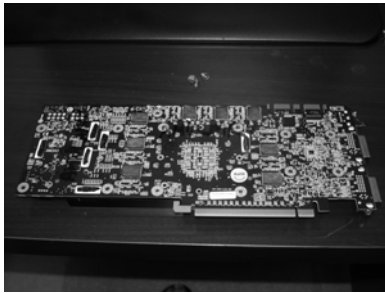
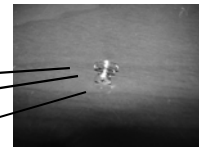
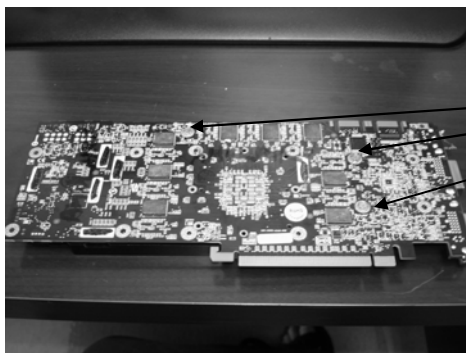


Step 1: Place uni-sink fins down and remove plastic film on gap pads.



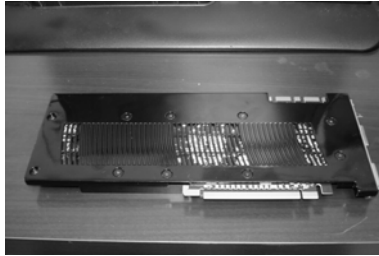
Step 2: Remove stock air sink from video card and place the card on top of uni-sink. Be careful to save sock mounting hardware

NVIDIA 280/260 UNI-Sink



Step 3: Install small silver spring screws (from stock cooler) in the three locations shown

NVIDIA 280/260 UNI-Sink



Step 4: Install 8 black spring screws (from stock cooler) in the locations shown in an alternating pattern.



Step 5: Apply thermal grease (not supplied) to GPU case.

NVIDIA 280/260 UNI-Sink

3



Step 6: place GPU block on GPU with the barbs positioned over the flat section of the uni-sink



Step 7: Tighten the four spring screws in an alternating pattern

NVIDIA 280/260 UNI-Sink

4